

# The Guide Book for Community Car sharing

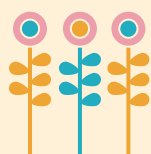


Illustration: Fumio Obata  
Design: Yuri Miyamoto



After the Great Japan Eastern Earthquake,

## ‘The Community Car Sharing’

was formed in the city of Ishinomaki. It was managed independently by a group of survivors at temporary housing.

In November 2014, ‘the Exploratory Committee of Ishinomaki Ecological EV Car Sharing’ was formed and since then it has been exploring the possibility of the long term implication ‘The Community Car Sharing’ and its introduction to the newly built reconstruction public housings.

This is a guide book for other areas to be able to practice a successful model of ‘The Community Car Sharing’- the result of our much discussion and analysis. We wish that this booklet will be a support for various municipalities, NGOs, neighborhood associations who face the themes of aging community, depopulation, disaster prevention and ecology.

The idea of presenting the content in Manga comic format derived from the theme of Ishinoamki - the city calls itself as ‘the City of Manga’. So please relax and enjoy the read as we all wish you to do so.



From the members of the Exploratory Committee of  
Ishinoamaki Ecological EV Car Sharing

# Contents

- What is this 'Community Car Sharing' from ishinomaki? . . . . . 4
- Backup Staff's Roles . . . . . 8
- Let's Start "Community Car Sharing!"
  - How to Start . . . . . 10
  - 1. Securing car for sharing . . . . . 11
  - 2. Guidance (assembling people who have interest in Car Sharing) . . . . . 11
  - 3. Orientation (establishing rules for a trial Car Sharing) . . . . . 12
  - 4. Trial Car Sharing (2 weeks – 1 month) . . . . . 14
  - 5. Establishing rules and setting up a community . . . . . 15
  - 6. Car registrations . . . . . 16
  - 7. Starting the community Car Sharing formally . . . . . 17
  - 8. Regular meetings . . . . . 17
  - What should we do in these situations? . . . . . 18
- Let's take a trip! . . . . . 20
- Strengthen the disaster prevention! . . . . . 22
- Relations with the region . . . . . 24
- (For reference)
- The Achievement in Yoshino Town's Post Disaster Public Housing . . . . . 26
- (For reference)
- Keep the Road Transportation Act! . . . . . 28
- (For reference)
- Spreading "Community Car Sharing" . . . . . 30



# WHAT IS THIS 'COMMUNITY CAR SHARING' FROM ISHINOMAKI?



During the Great Eastern Earthquake in 2011, the tsunamai engulfed more than 60,000 cars in Ishinoamaki alone.

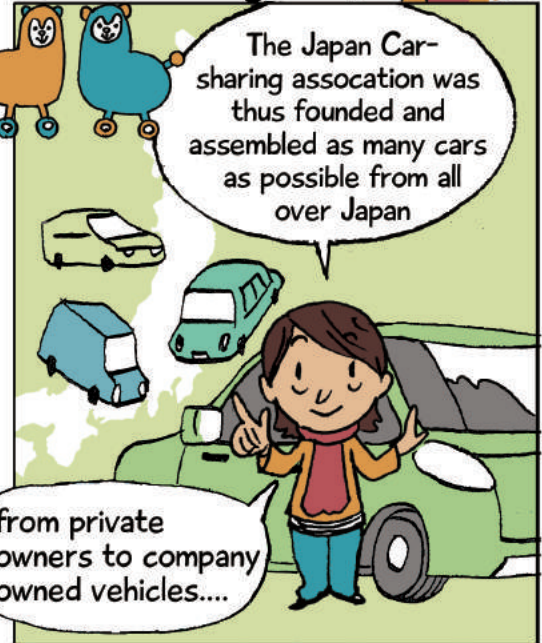


The locals suffered from severe shortage of transport.

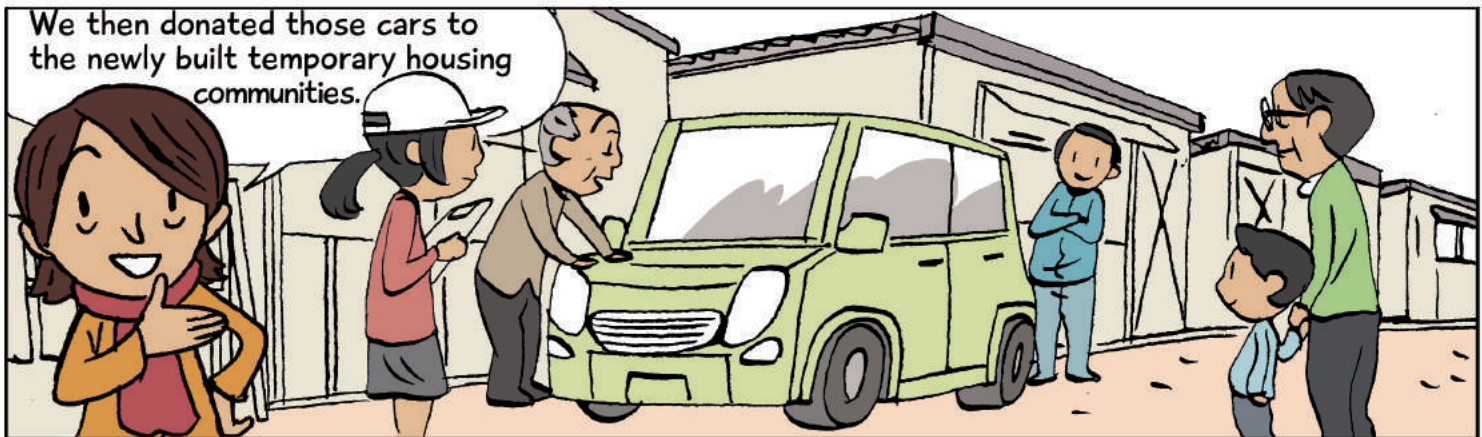


The Japan Car-sharing association was thus founded and assembled as many cars as possible from all over Japan

from private owners to company owned vehicles....



We then donated those cars to the newly built temporary housing communities.



So you can imagine our car-sharing program has been different from the start compared to those we see in other places.



The managements such as...

Expenses



Car-keys



The booking system

All of these were discussed in each user's community and the rules were decided by themselves.



Simply because there was no one to do it for us.



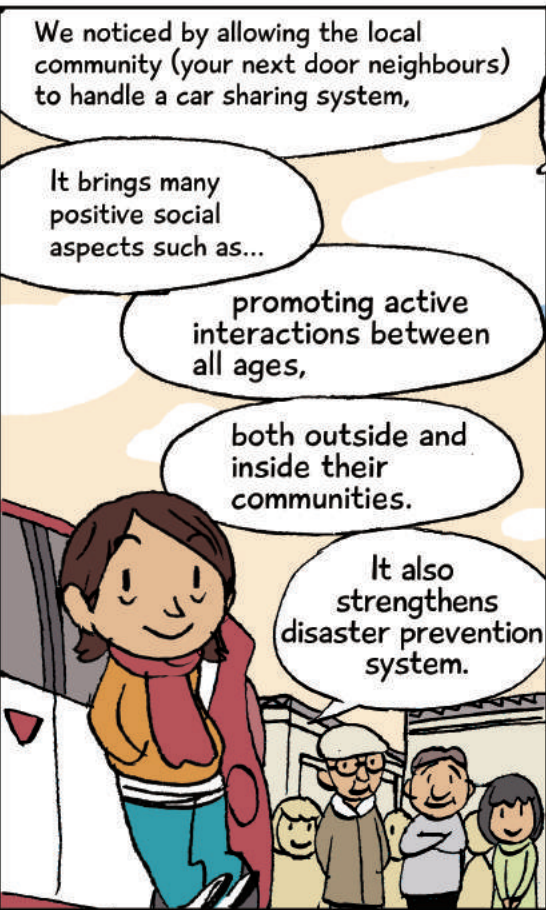
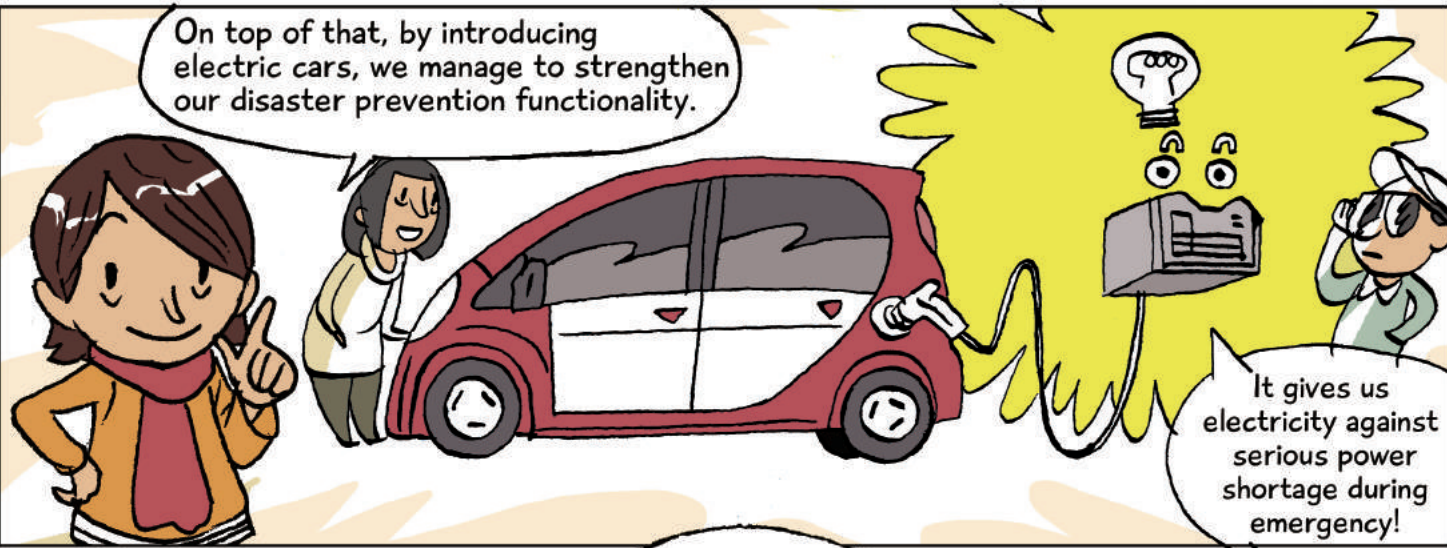
But it brought positive side-effects into the new neighbourhoods.



which quickly developed a mutual cooperative spirit

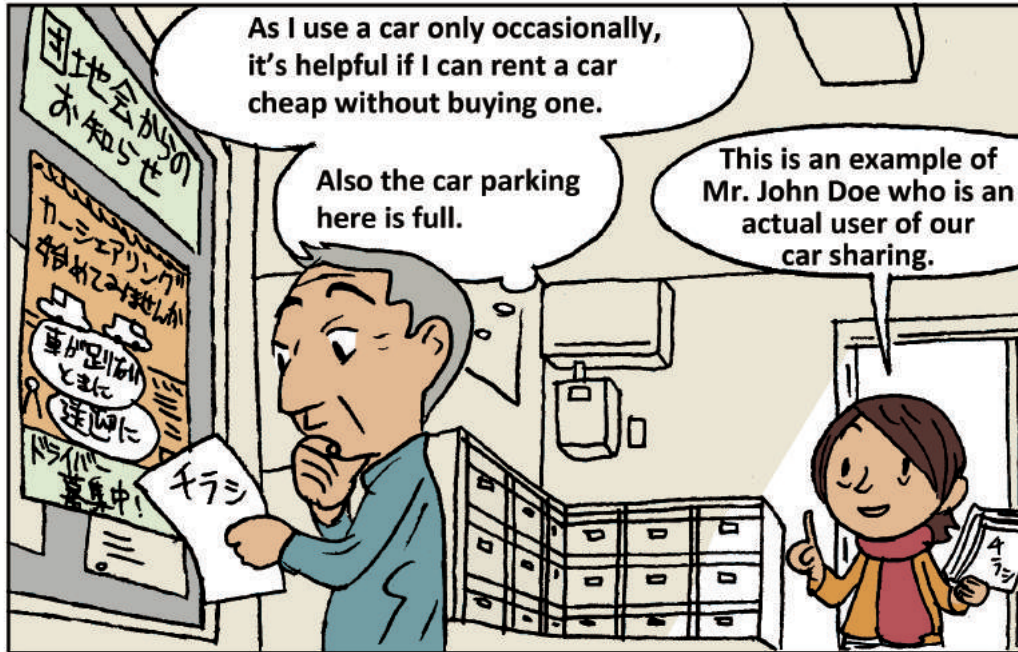


And it had indeed deepened the bond between residents



# WHAT IS 'COMMUNITY CAR SHARING' ORIGINATED IN ISHINOMAKI?

2



As I use a car only occasionally, it's helpful if I can rent a car cheap without buying one.

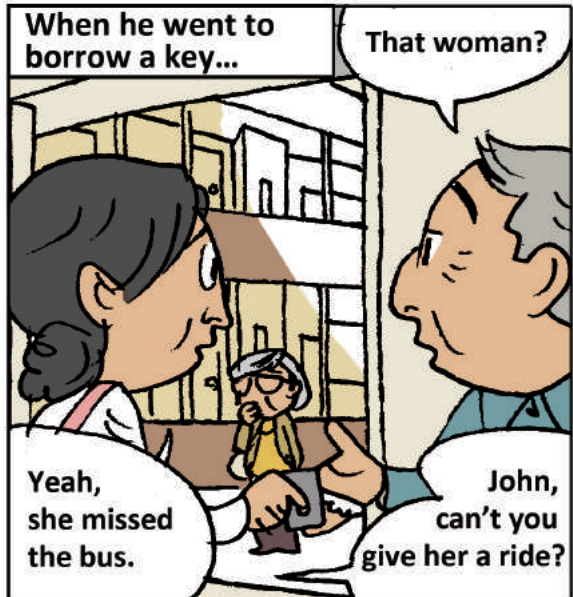
Also the car parking here is full.

This is an example of Mr. John Doe who is an actual user of our car sharing.



In the meeting to make users' rule...

We know each other but have never really talked.



When he went to borrow a key...

That woman?

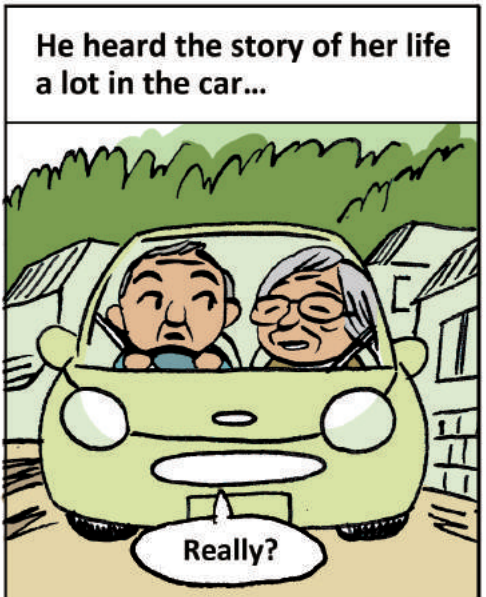
Yeah, she missed the bus.

John, can't you give her a ride?



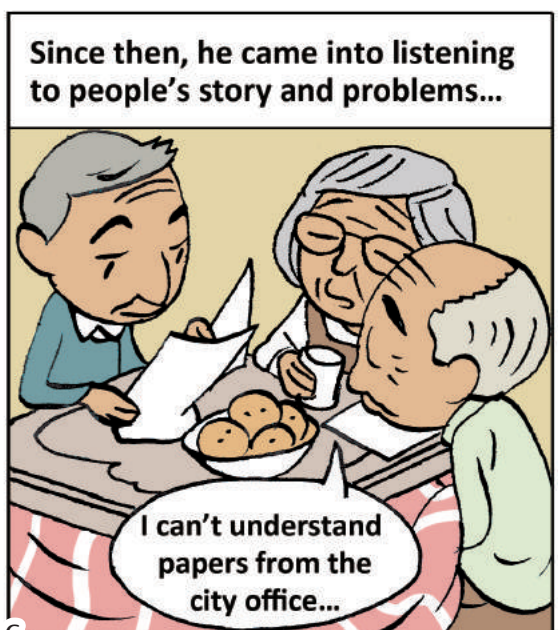
Shall I take you to a hospital?

That's very kind of you.



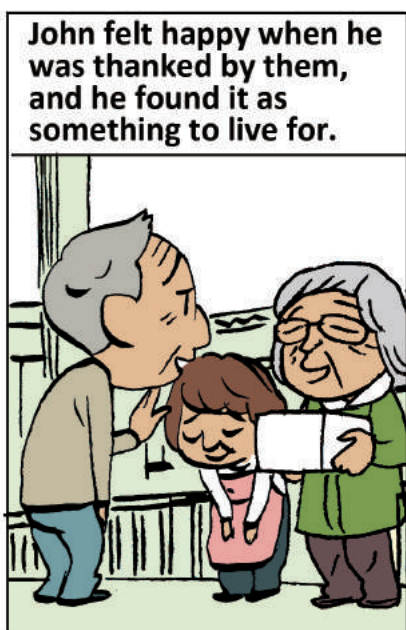
He heard the story of her life a lot in the car...

Really?

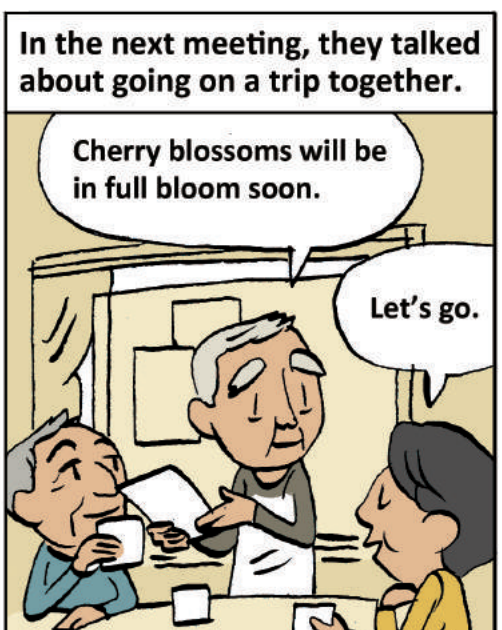


Since then, he came into listening to people's story and problems...

I can't understand papers from the city office...



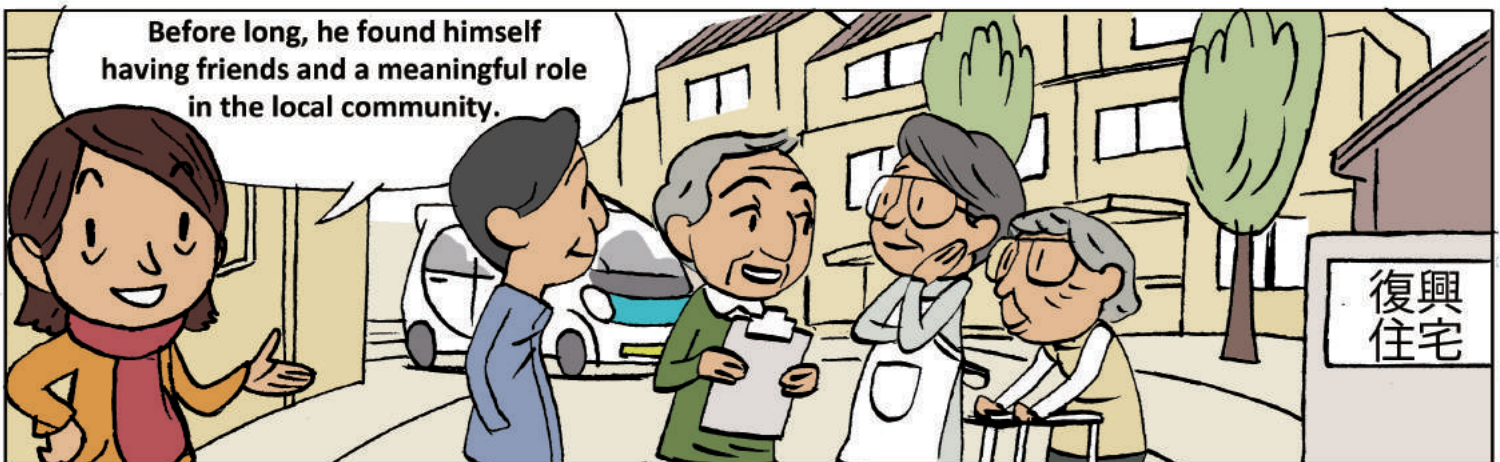
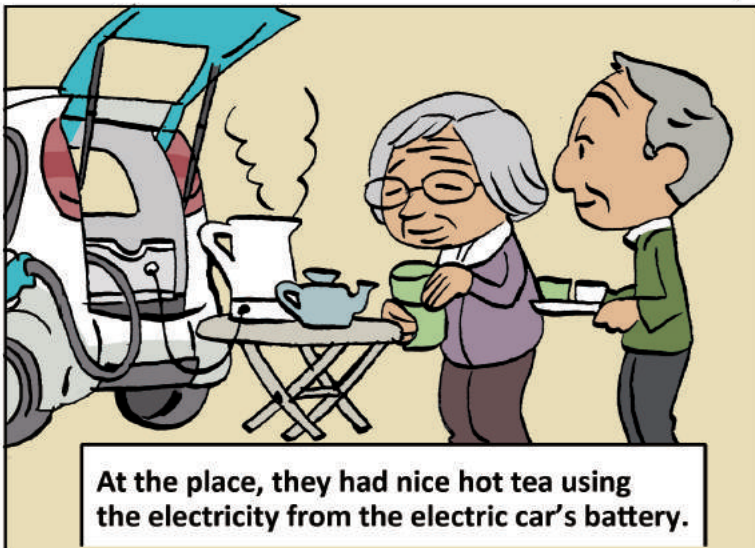
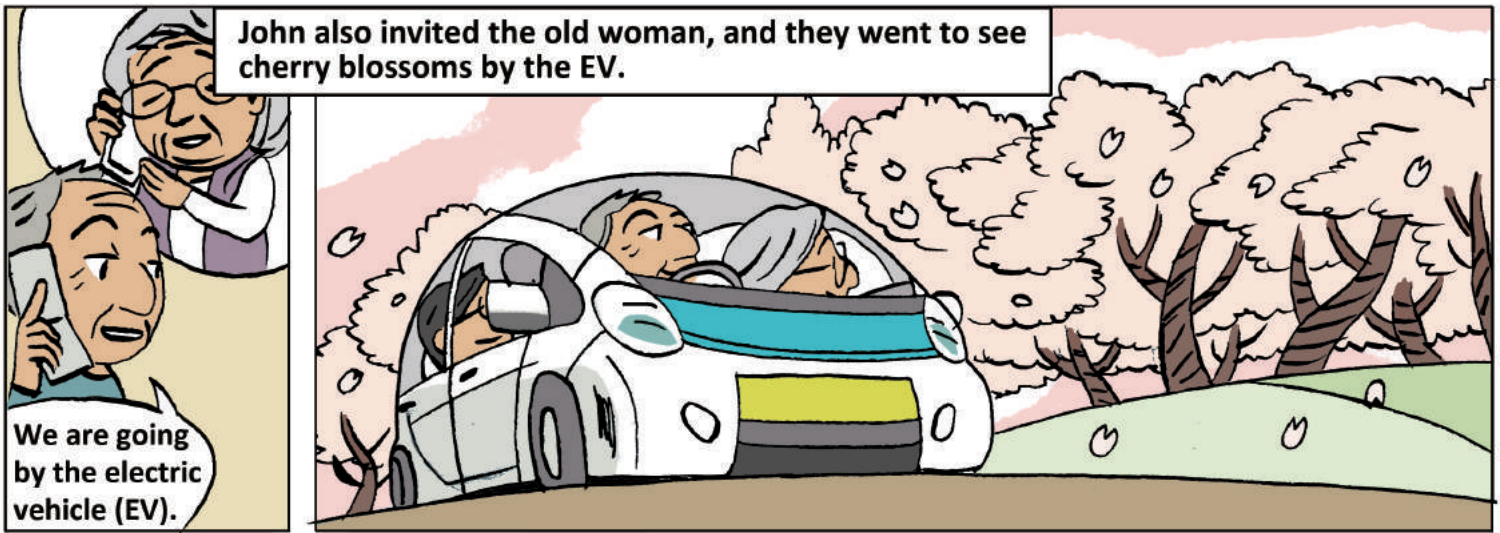
John felt happy when he was thanked by them, and he found it as something to live for.



In the next meeting, they talked about going on a trip together.

Cherry blossoms will be in full bloom soon.

Let's go.



### Points

- It is operated by the residents who use a car.
- It helps them establish a new community through the car sharing activity.



The key points of community car sharing.

### Activities arisen

- Car sharing
- Outing support action
- Events such as trips
- Disaster drill using electric cars, etc.

### Good effect

- Economy
- Easing of carpark problems
- Facilitation of residents' communication
- Creation of people's motivation in life
- Watching for elder people
- Enhancement of disaster protection function
- Outgoing support for people without transportation





# Backup Staffs' Roles

On doing community car sharing, everything is made smooth by backup staffs. They make conditions easier to start for people who are concerned about it. They help one another step by step. After that, they support in the background.

## Examples of the roles (In Ishinomaki City)

### Introduction Support

- Offer orientations
- Facilitate when people exchange opinions
- Support to make rules
- Explain car insurance\*
- Lend a car out\*
- Register cars\*

\* JCSA does these in Ishinomaki, but you can also entrust it to a leasing



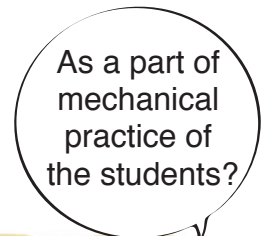
### Management Support

- Public information support
- Adjustment of human relations
- Suggestion for plans (Going out support, travel, disaster prevention drill, etc)
- Giving some advice



### Co-ordination with regional contact

- Contact with administration, educational institutions and enterprises.



## Ishinomaki's case

### Car Sharing Community Support Center

In February 2012, Ishinomaki City established the Support Center as a base which supports post-disaster public housing and community car sharing in the region. The Japan Car Sharing Association (JCSA) was entrusted the management by Ishinomaki City. The people who were the users of car sharing became the staff. They are playing an active part using their own experiences.



Offering orientation



Visiting the users and checking the situation



The students who study automotive engineering are helping the car maintenance



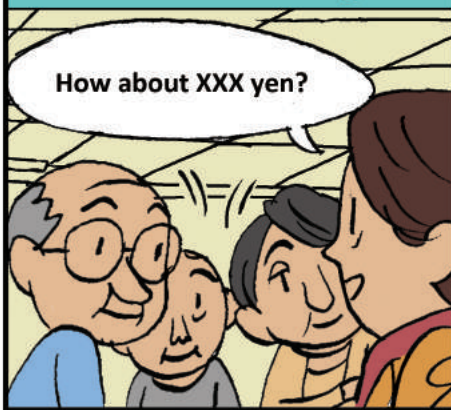
## Harmonize users' views



When asking separately...



In the next meeting.



## Support them with proper distance

When a discussion goes back and forth...



We introduce other examples and make suggestions.



However, decisions should be made by the users.

You may be asked such things occasionally.

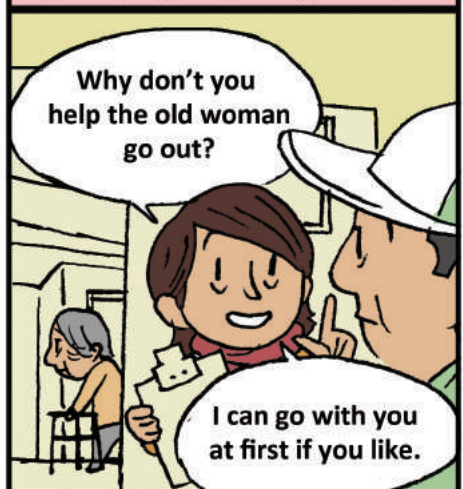


You need to refuse flatly but with love.

## Give a supportive push



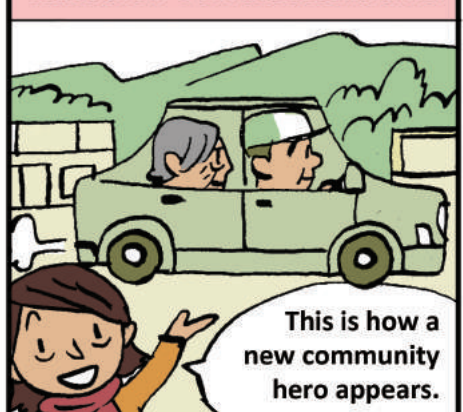
We also support to find such good people by doing surveys.



The first time he helps



Leave them from the second time.



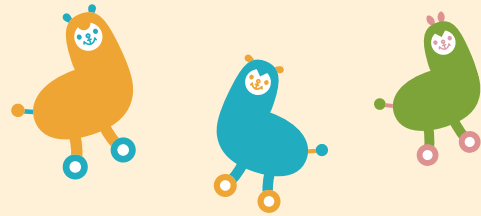
# Let's Start “Community Car Sharing”!

Part.1

## ✿ How to start

- 1 . Securing cars for sharing
- 2 . Guidance (assembling people who have interest in car sharing)
- 3 . Orientation (establishing rules for a trial car sharing)
- 4 . Trial car sharing (2 weeks – 1 month)
- 5 . Establishing rules and setting up a community
- 6 . Car registrations
- 7 . Starting the community car sharing formally
- 8 . Regular meetings (expense settlement)





## 1. Securing cars for sharing

In Ishinomaki's case, cars that were donated to the Japan Car Sharing Association (JCSA) are used. JCSA lends cars without charge for the first trial, which makes a community start car sharing smoothly (vital). The city of Ishinomaki is also working together to secure cars, calling on car donation through its city bulletin etc.

### ✳ Possible ways to secure cars are bellow :

1. Using extra cars municipality owns
2. Calling on car donation
3. Using rental cars

※it is undesirable to use privately owned cars for car sharing because it is to apply the owner's car insurance when an accident happens, which could be a burden to the owner.



## 2. Guidance (assembling people who have interest in car sharing)



Announce that an orientation will be held by way of bulletin boards, circular notices, posting, etc.

※ When attendance is expected to be low, it would be better to find people who are likely to show interest in this activity (having trouble in going out, lacking cars, willing to do something for the local community etc.) by taking survey etc. and inform them of the orientation individually.

# Let's Start "Community Car Sharing"

part.2



## 3. Orientation (Making rules for the trial)

<p>First, we explain how the community car sharing works.</p> <p>In short, you all use this car together.</p> <p>Would you like to make a trial drive?</p>	<p><b>Key point 1</b></p> <p>Users who drive the car</p> <p>Users who get support from the volunteer drivers</p> <p>They are both users of the car and need to share the expenses.</p> <p>You are not a customer.</p> <p>OK</p>	<p><b>Key point 2</b></p> <p>It's not a taxi nor a rental car. It's the mutual help among residents.</p> <p>They are volunteers, not professional drivers.</p> <p>OK</p>
<p>Next, we gather users' needs.</p> <p>I want to use it while my husband uses our car for work.</p> <p>It'll be good if someone drives me around as I can't drive.</p> <p>As I have much time, I can help you.</p>	<p>Then, we explain them how much expenses will be needed for the community car sharing.</p> <p>The fee for leasing a car is XXX</p> <p>The car insurance will be XXX</p>	<p>After all the explanation, we propose them to have a trial for 2 weeks - 1 months!</p> <p>To see if this is really necessary for our community.</p> <p>If we can help them to reduce their cost during the trial, they can start easily.</p> <p><small>*The trial cost is free in Ishinomaki.</small></p>
<p>Set up the rules for the trial roughly.</p> <p>You'll use the car often, so leave one key with you.</p> <p>Also leave one at your place as you usually stay home.</p> <p>To book a ride, let's call him.</p> <p>We keep the daily report.</p> <p>Let's sum up how many km does each ride.</p>	<p>However, it's important not to violate the Road Transportation Law.</p> <ol style="list-style-type: none"> <li>1. Do not always use for somebody's transportation.</li> <li>2. Do not collect money other than expenses.</li> <li>3. Do not differ the cost depending on the style of use.</li> <li>4. Do not decide the reward amount for the volunteer drivers.</li> </ol> <p>The details of the law are in the pages 34-35.</p>	<p>Now, let's start a trial use!</p> <p>Let's TRY!!</p>

## ✿ The point of the orientation

To aim at starting a trial car sharing.

## ✿ Things to be decided when establishing rules

- Parking spaces
- Representative (personality matters)
- Way to take care of car keys
- Way to make reservations
- Way to refuel cars (in gas-powered car' s case)
- Usage unit\*



\* usage unit is a unit stipulated for sharing the expenses according to the frequency of use. It is defined according to, for example, driving distance (e.g. every five kilometers), or driving time (e.g. every one hour).

Members share the expenses according to the units each of them used. For further information, please see p.17 (Regular meetings).

## ✿ Expenses for community car sharing (roughly estimated)

### 1. Car maintenance costs \*when owning mini vehicles \* ( )=mid-size cars

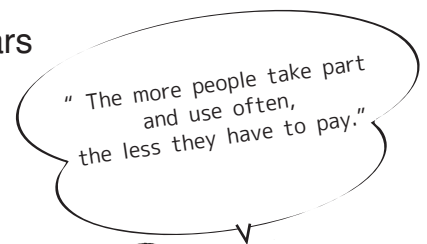
- Vehicle inspection fee: approx. 100,000 (120,000~150,000) / 2years
- Tax: 7,200 (30,000~ 40,000) / 1year
- Insurance premium: approx. ¥100,000/ 1year  
\*unlimited bodily injury liability, unlimited property damage liability and motor hull included. Age limited
- Supplies (engine oil, tires, etc.): approx. ¥50,000/ 1year

### 2. Official's Allowance of management staffs

\*Fuel expenses are excluded above.

\*Maintenance costs may vary when using lease cars (lease fee will be added) or rental cars (rental fee will replace maintenance costs)

 In Ishinomaki, JCSA lends cars



## \* Particularly important points

(Guidance from Ministry of Land, Infrastructure, Transport and Tourism)

- Keep balance in operation. Transferring or lending only is not desirable.
- Do not make a distinction in fees by the form of use
- Share the expenses appropriately among members
- Do not stipulate volunteer driver' s fees

\*for further information, please see p.34-35

# Let's Start "Community Car Sharing"!

part.3

## 4. Trial car sharing (2weeks-1month)

Everyone worked together to establish the rules. However, there might be things to improve when you put the car sharing into practice. Trial is a period to find as many problems as possible.



In order to experience various cases, it would be better for members to use car sharing as many times as possible during this trial period.

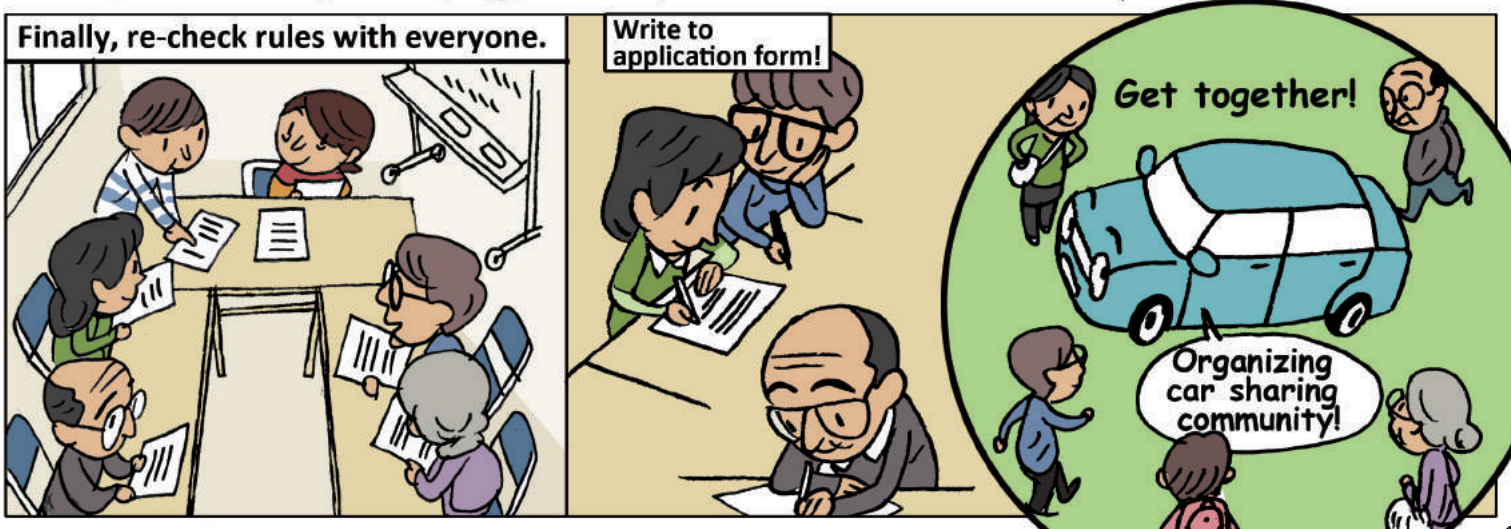
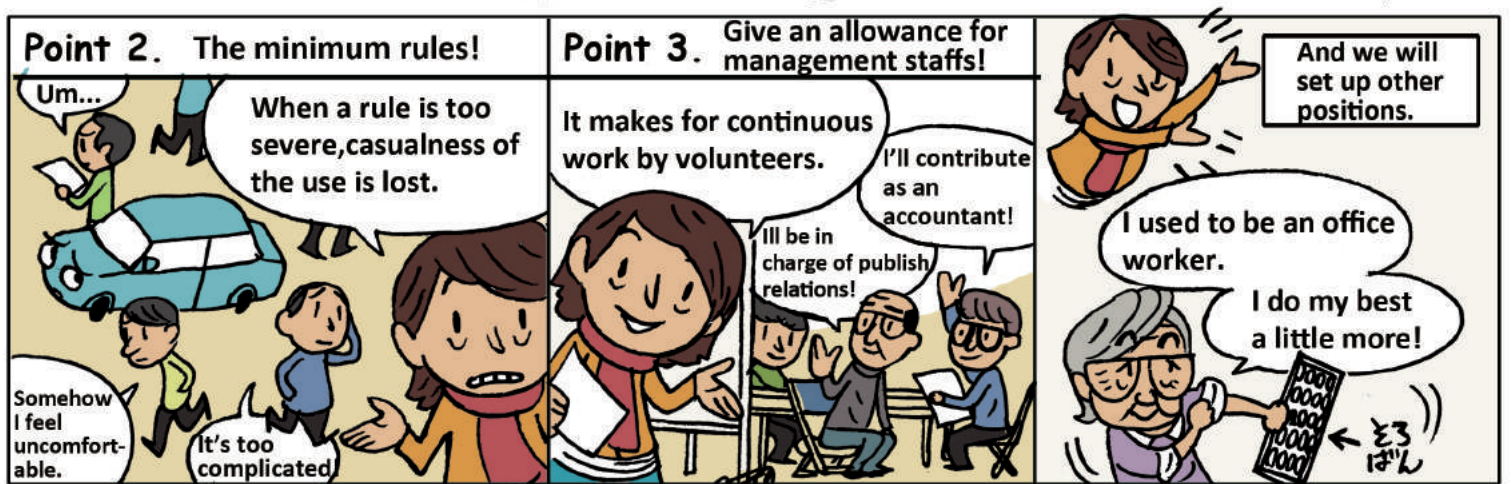
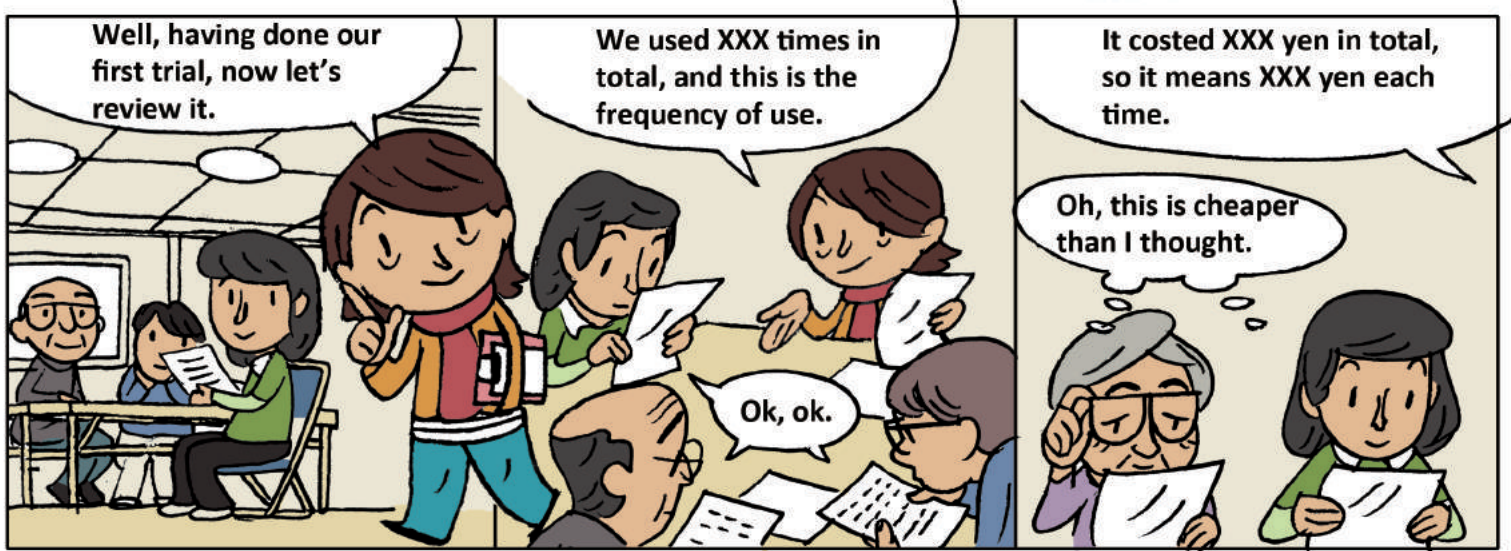
Confirming each member's opinion one by one, discuss how to revise the rules!



❁ Rules of 'Yoshino's Car Sharing Society', which was organized by residents of Yoshino's post-disaster housing in Ishinomaki, are introduced on the JCSA's web site([www.japan-csa.org](http://www.japan-csa.org))



# Vol.5 Make rules and start as a car sharing community.



# Let's Start "Community Car Sharing"!

part.4

## 6. Car registrations

When starting community car sharing formally, car registrations and some contracts are necessary. Choose appropriate forms of them according to your community's style.



### \*Case 1. Own cars by yourselves

You need to take care of cars by yourselves. On the other hand, expenses are cheapest. You need to be careful when you borrow and use privately owned cars (e.g. use one of the members' car). It is to apply the owner's car insurance when an accident happens, which will affect the insurance grade. To register in the name of the community is recommended.

#### Procedure required

##### 1. Car insurance contract

\*By setting age limit, you can reduce the premium drastically.

\*Not setting exemption is recommended because you can apply the insurance smoothly without extra fees when an accident happens

##### 2. Garage certificate (at local police)

##### 3. Change the ownership (at transport branch office)

\*When you register in the name of the community, you need to bring utility bills (e.g. land line, gas, water) with you.

### \*Case 2. Lease cars

It depends on the contract with a leasing company, though, you usually will take care of cars by yourselves. You have to go through various procedures by yourselves, however, you can reduce the expenses if you carefully choose a leasing company, a type of cars, a leasing plans etc. The contract will be basically on a long-term, yearly basis.

#### Procedure required

- Car Lease contract \*Because there are various types of contract, you need to examine them carefully. In addition, you have to do the procedures in Case1. 1-3 (you may consign them to a leasing company)

### \*Case 3. Rental cars

Vehicle inspection fee, repair fee, premium etc. are included in the fee. Usually rental companies take care of cars, which enables you to pay less efforts to take care of them. Moreover, register procedures such as making insurance contract, changing ownership are not necessary. You can rent cars monthly. However, fees are more expensive than leasing.

#### Procedure required

- Car Rental contract



## 7. Starting the community car sharing formally

When you complete the car registration, you can start the community car sharing formally. (You did it!)



## 8. Regular meetings (expense settlement)

Let's get together on a regular basis, and have a talk over cups of tea. During the talk, discuss amending the rules, planning a trip etc. Also, fix the regular date for expense settlement so as to make an opportunity to settle deficit and surplus.



### Expense example

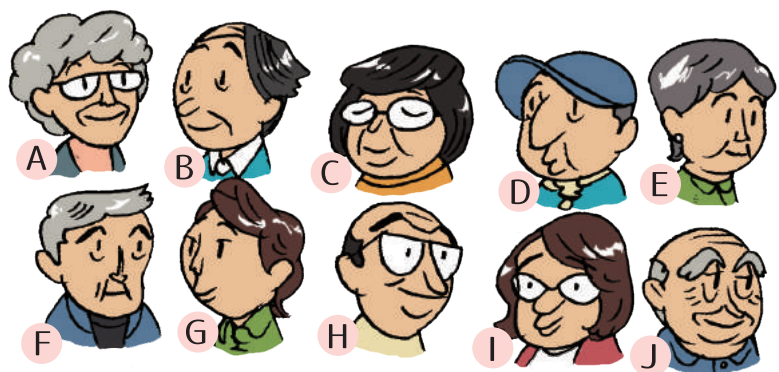
Members: 10 people (A~J)

Deficit: ¥5,000

Total usage units: 100 times

Period: 1 month

Usage unit by each member: A:20, B:18, C:15, D:13, E:10, F:8, G:7, H:5, I:3, J:1



Each share in the expense (¥):

A:1,000, B:900, C:750, D:650, E:500,  
F:400, G:350, H:250, I:150, J:50

# Let's Start "Community Car Sharing"!

part.5



## What should we do in these situations?

3 most frequently asked questions

### 1. How can we avoid human relations trouble?

- Explain properly what the community car sharing is.  
▶ As trouble makers are probably misunderstanding the community car sharing as taxis or rental cars, to explain properly that the nature of the community car sharing is cooperation may settle the problem.
- Confirm the individual situation.  
▶ A third party confirms what each one is thinking and adjust the situation.
- Try to make a good match of members for going out support.



### 2. How can we reduce economic burdens for members?

- Plan events such as a trip and allocate part of the trip participation fee to the operational costs of the community.
- Plan a bazaar and allocate part of proceeds to the operational costs of the community.
- Cloud funding (fund raising via the Internet)
- Apply for subsidy



### 3. How can we increase members?

- Make flyers etc. and advertise for new members.
- Take survey steadily and find people who are likely to take part in.



## Mind to be cherished in community car sharing

### Consideration for others

Consideration for others or being grateful to volunteer drivers make the things go smoothly.

### Positive thinking

If you can treat problems as a challenge to overcome all together, you can create various new activity from them.

### Generosity

You can be easily sensitive because you don't use cars exclusively, but share them with many different people. However, it's meaningless on car sharing. Be generous toward everything.



## Q & A

### Q. How many cars should we prepare?

- A. It depends on how many members there are or how often members use the cars etc. It would be better to start with one car and increase cars gradually, considering expenses or how situation goes.

### Q. What is the difference from taxis or rental cars?

- A. Although there are many, two differences easily understood are :
- Prices are not fixed. Community car sharing is a system that share the actual expenses among members equally after a certain period of time.
  - It is a voluntary activity by residents. You cannot ask volunteer drivers to take you out when they are not available.

### Q. How can we secure cars?

- A. A. In Ishinomaki' s case, the community is using cars they called on donation. At first, it would be better to ask for donation around you. It might be a good idea to ask local car dealers for advice. Also, JCSA gives advice about lending cars.

### Q. What should we be careful about when we start going out support?

- A. To explain properly what the community car sharing is to the members asking for going out support. Members should understand that it is a voluntary, cooperative activity. They should respect supporters/volunteer drivers and behave themselves with consideration. Moreover, when senior citizens take part in the community, it is important to receive an agreement from their families.

### Q. How can we be a new member?

- A. Firstly, please confirm the rules and regulations of the community. Next, submit the application to the representative or deputy representative, then you will become a member. If you are to drive by yourself, a copy of your driver's license is necessary along with the application. When you want to withdraw the community, please submit the notice of withdrawal.

### Q. What is the biggest challenge?

- A. Briefly, whether there are supporters or not. Especially, when there are volunteer drivers, the community will be very active.

# Let's take a trip!



The best way to promote the solidarity among residents is...

Through the car-sharing, self-planned trips, they will...

Start conversations,

To take a trip together!

'Driver is wanted for a XXX hot spring trip.'

'Participation fee discount benefit is offered' ... sounds good.

Let me tell you about my grandchild...

Have a new encounter,

Secure financial resources,

Be in good disaster prevention training if they supply electricity on the way,

I was also interested in using the car sharing but I was too shy to mention so...

Part of travel fee will be saved for car maintenance expenses.

Please note that advertising the trip to unspecified number of people and collect money from them will violate the Travel Agency Act.

N.B.:

Have a cup of tea prepared with vehicle electric power.

Save fuel costs by using a charging station efficiently,

Bring about the roles,

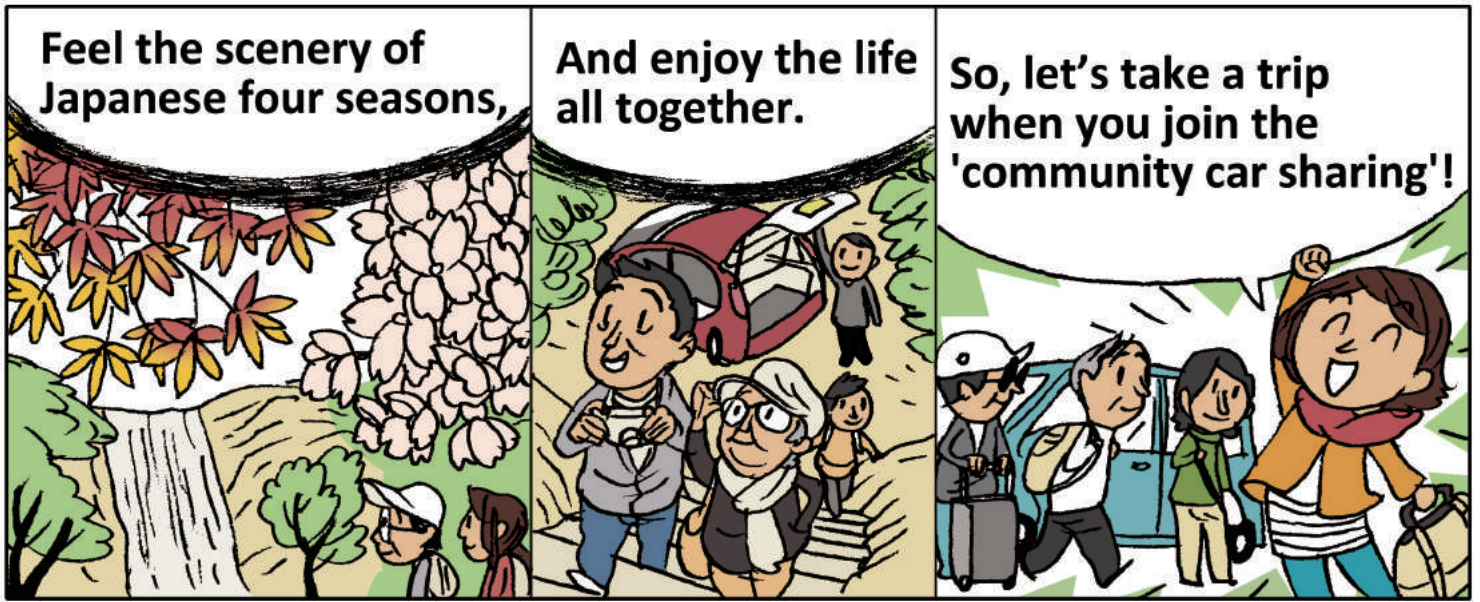
Have the opportunity of going out,

Roadside station

A driver

Camerman



Sounds good, I want to go!




----- However, planning a trip is not that easy. -----

At the regular meeting



Upon this,  in Ishinomaki, five temporary housings join hands and plan EV trips together! 

\* People in charge from each temporary housing get together regularly, and one of them plans a trip every three months by rotation. 

**Consequently, it deepens friendship among different temporary housings.**



# Strengthen the disaster prevention!



The disaster prevention system installed in Yoshino's post-disaster public housing.

**That day suddenly came...**

**The whole area of Ishinomaki city suffered from a blackout!**

**The crisis management division of the city requested us to provide an electric car at a shelter in XX area. Can you go?**

**All right!**

**A member of the car sharing**

**Oh no, almost no battery!**

**We forgot to charge.**

**Now I gotta go to Yoshino's housing!**

**The system installed here can charge cars with solar power only!**

*\*See pages 36-37 for details.*

**You can't move the car nor use the electricity from the car in this case - the electric car can't maximize it's potential.**

**Because solar power system which just covers the normal power system may not work properly in an emergency!**

**It started raining.**

**We won't be able to generate electricity today.**

**No problem!**

**EV can supply electricity to other EV whether it rains or not and go to provide electricity in different areas..**

**It's charged. Let's go to the shelter!**

**The car could provide the electricity at the shelter without problem.**

**In Ishinomaki city, they are discussing to install this disaster prevention points in each area to maximize the electric car's potential.**

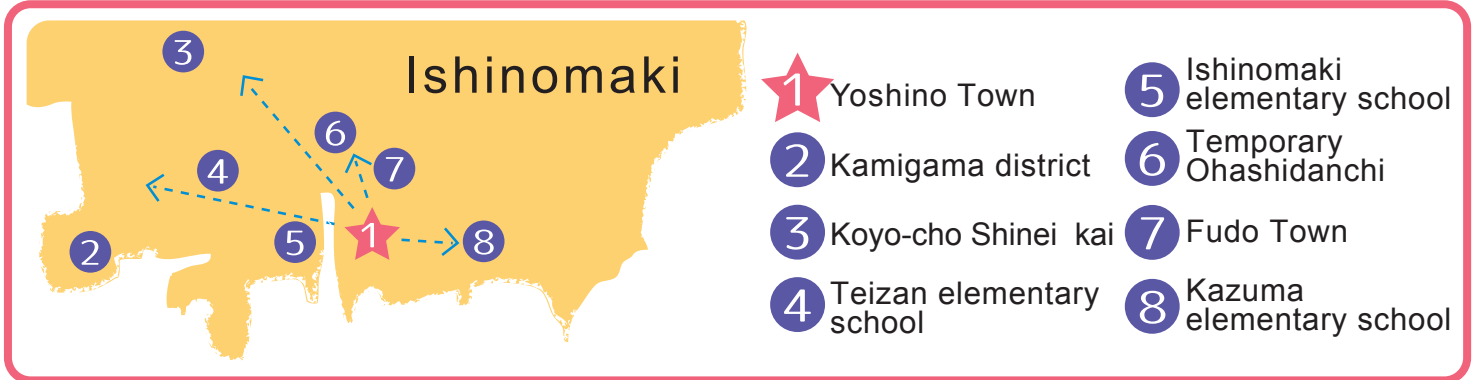
**The city and the citizen jointly establish the environment to use the electric car in an emergency...**

**That's ISHINOMAKI DISASTER PREVENTION STYLE!**

**Yeah!!**

# The actual practiced emergency drill

A major emergency drill involving electric cars was practiced in the city of Ishinomaki in November 2015.



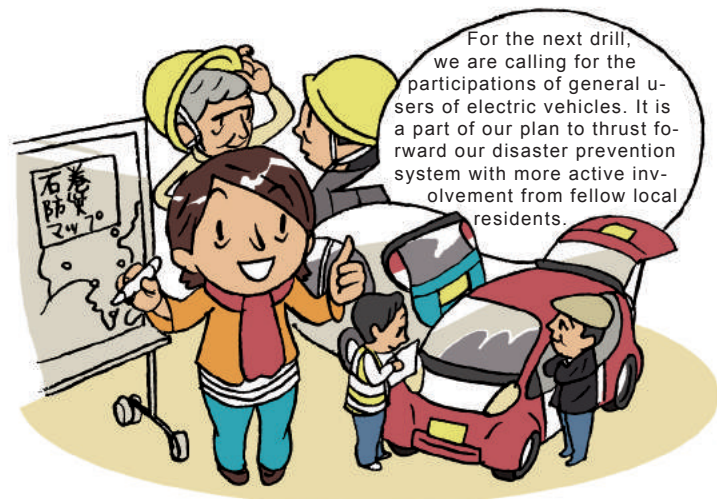
After assembling a total of 9 electric cars at the reconstruction public housing in the town of Yoshino, the drill started involving a technique of how to recharge the vehicles **“only with the energy supply generated by the solar power system”**. Afterwards, the cars went to 8 potential disaster stricken zones in the city and exercised the provision of electricity at each area.



\*Drill to recharge the electric cars.

\*Drill to distribute electricity to various outlets.

The general users of Car Sharing and the local car dealers got together at the drills and joined the practices together.



# Relations with the region

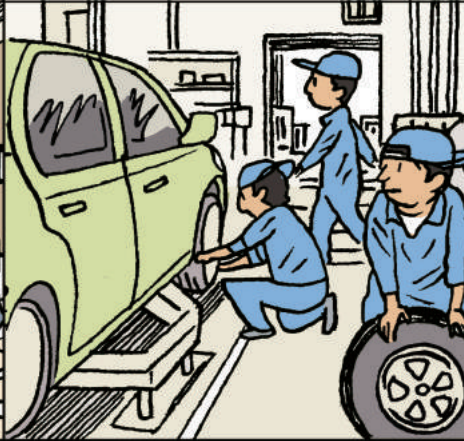


The chain of relation which has arisen from the community car sharing.

This is a car we use for the community car sharing.



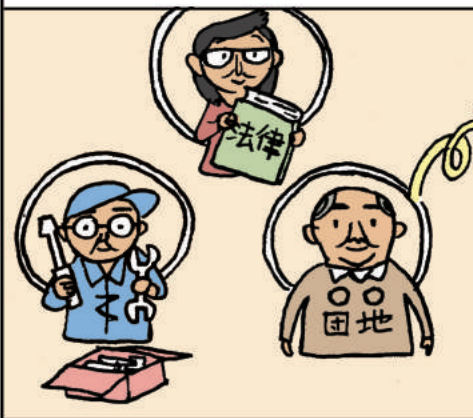
A seasonal tire change of this car is done by students who study automotive engineering in the local university, and it's a part of their lessons.



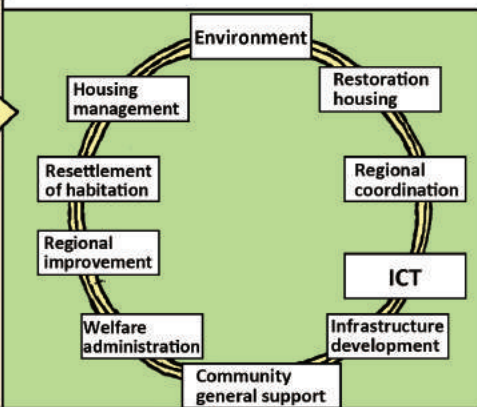
Also, professors in this university are members of a committee which regularly consult about how to make the structure of the community car sharing better.



This committee consist of not only the professors, but also law or technical specialists, residents' association, and the municipality.



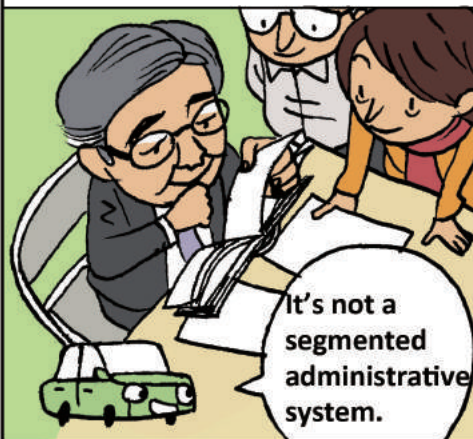
As for the municipality, managers of 10 sections exchange opinions regularly because the community car sharing is related to many different fields.



They discuss the cooperation of each policy and work together to make good use of subsidies to let the cooperation go smoothly.



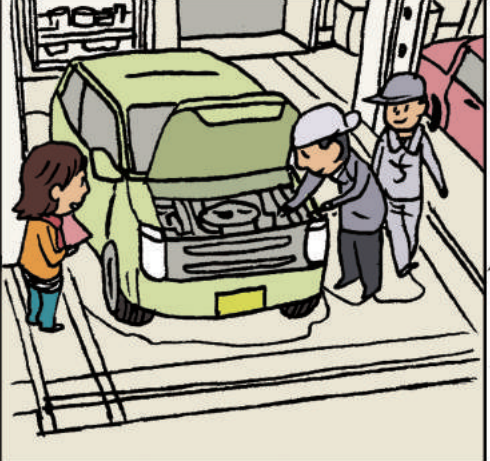
The mayor also checks the progress by himself and integrates their effort into a citywide policy.



Actually this car was given to the city by a citizen. The city was collecting cars, and he saw the advertisement in a city newsletter.



Then we can have a safety inspection done on this car once a year by a local automobile maintenance shop for free. So we don't have to worry about.

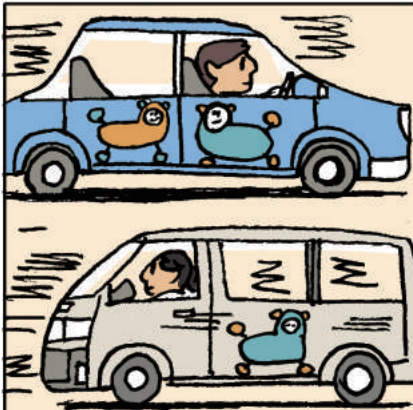




Moreover, a petrol station nearby gives special discount. It makes us warm inside.



In point of the welfare, the cooperation with a social welfare council, local NPOs, and social workers is also necessary. When someone is in trouble, the car sharing community communicates with them.



These NPOs also utilize cars which were donated to JCSA for these activities.



Let's make our future wonderful for everyone and everything with community car sharing!

OK, LET'S JUST TRY!



# The Achievements in Yoshino Town's (For reference) Post Disaster Public Housing

We show the results (in 2015) of Yoshino's post-disaster public housing which Ishinomaki Eco EV (Electric Vehicles) car sharing investigating committee supported.

## The characteristics of Yoshino's post-disaster public housing

- The number of households: about 150 (about 300 persons)
- Many of the inhabitants are Tsunami survivors around Yoshino town.



As a token of a member of 'Yoshino's Car Sharing Society', three kinds of magnetic stickers are given and put on the front-doors of their houses.

Management Staffs Supporters Users



management member



supporter



user

### The content of carrying out

<b>April</b>	Handing the car-key (until May during the moving period from temporary housings)	<b>October</b>	Going for a driving trip to Naruko hot spring
<b>June</b>	Introduction of car sharing Orientation Starting a test trial	<b>November</b>	Disaster prevention drill
<b>July</b>	Starting full scale activity with two EVs	<b>January</b>	Yoshino car sharing community is established A trial period with new rules (one car)
<b>September</b>	Demonstration by using an EV battery on a local hiking	<b>February</b>	EV trip to Oiwake hot spring Starting full-scale Yoshino's car sharing

### Actual conditions of use

#### The number of users

The cars were used steadily more or less, except a temporary decreasing of car use by the change of the regulations and the use of a loaner car during maintenance. The number of the member of Yoshino car sharing community became 30 (in February 2016). 10 percent of the occupants took part in as members.

	June	July	August	September	October	November	December	January	February
Drivers	3	5	4	3	3	2	2	2	2
Use for going out support (in the same housing complex)	7	10	10	8	7	8	11	10	12
Use for going out support (in other housing complex)	6	6	7	7	4	4	4	1	4
<b>Total</b>	<b>16</b>	<b>21</b>	<b>21</b>	<b>18</b>	<b>14</b>	<b>14</b>	<b>17</b>	<b>13</b>	<b>18</b>

#### The number of times of use

	June	July	August	September	October	November	December	January	February
Personal use	8	15	10	13	3	6	4	13	5
Use for going out support (in the same housing complex)	15	28	21	24	27	19	41	22	32
Use for going out support (in other housing complex)	12	14	16	22	8	10	10	1	14
The rest	0	3	5	6	6	5	9	0	12
<b>Total</b>	<b>35</b>	<b>60</b>	<b>52</b>	<b>65</b>	<b>44</b>	<b>40</b>	<b>64</b>	<b>36</b>	<b>58</b>

#### Driving distance (km)

	June	July	August	September	October	November	December	January	February
Driving distance	1012	1185	1121	1118	1497	1140	1132	654	1008

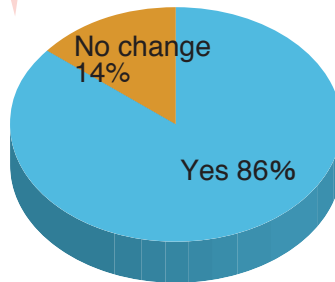
# The Survey Result

(Numbers responded: 68 out of 150 households)

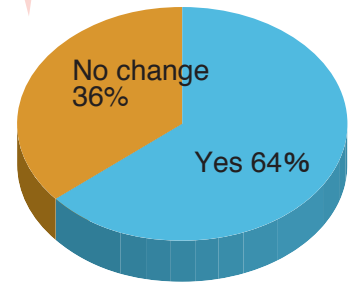
## Transfer

The difficulty of transfer is improved and the frequency in going out is increased.

Q. Is the transfer problem improved?\*



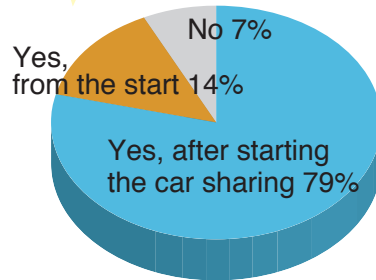
Q. Is the frequency in going out increased?\*



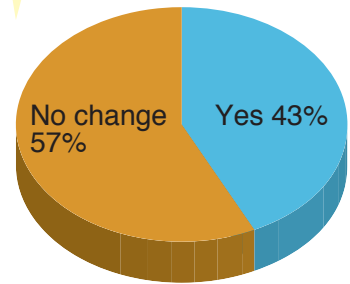
## Disaster prevention

The awareness about the use of EV for disaster prevention is increased, and the residents' cooperation becomes easier when taking shelter.

Q. Do you know about the use of EV for disaster prevention (which we can use electricity from the car)?



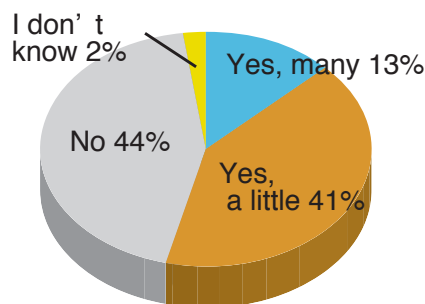
Q. Did you gain more people to take shelter together other than your family? \*



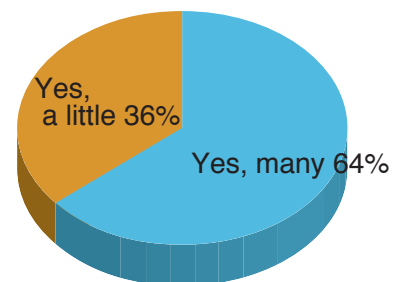
## Community

Users' social relationship is much greater than residents who are not using it.

Q. Do you have close people in the housing complex?



Other than car sharing users

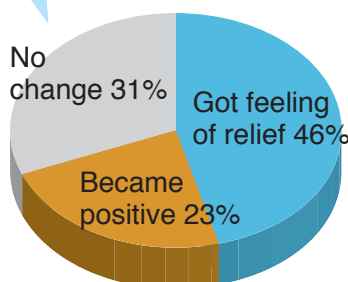


Car sharing Users

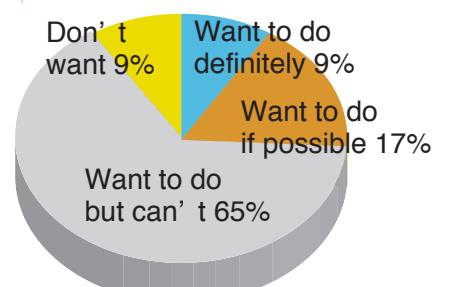
## Mental aspect

There is also a positive change in mental aspect and increasing interest as a community activity they can participate.

Q. Did you have any change in your mind? \*



Q. About cooperation for car sharing



\* are answered by community car sharing users only.

(For reference)

# Keep the Road Transportation Act!

## The act to understand before starting Community Car Sharing

\* In paragraph 3, Article 2 of the Road Transportation Act, it stipulates that

"It is a passenger automobile carrier business that carries passengers by using cars for a fee at the request of others."

\* In paragraph 2, Article 80 of the Road Transportation Act, it stipulates that

"Private vehicles must not be lent as a business for a fee unless they receive permission from the Minister of Land, Infrastructure, Transport and Tourism."

Therefore it is important to obtain permission under this act if applicable.



Pickup or car rental that receive consideration must not be done without permission and authorization.

The Exploratory Committee of Ishinomaki Ecological EV Car Sharing repeatedly consults and deliberates with the Tohoku Transportation Bureau and the Minister of Land, Infrastructure, Transport and Tourism to conduct social experiment at the Yoshino Town's Post Disaster Public Housing. Then the committee tried to establish a simple system which combines legality and comfort of use and arranged four notes in the next page.



Details of the process of discussion with the Tohoku Transportation Bureau and the Minister of Land, Infrastructure, Transport and Tourism and other related information are published on the special page of this booklet on the Japan Car Sharing Association website ([www.japan-csa.org](http://www.japan-csa.org)).

# Four points to comply with the Road Transportation Act

## 1 Do not place disproportionate weight on transferring and lending a car

Establish rules among the members in advance, and make it as a part of regional cooperative activities to realize comprehensive purpose to establish a community through holding events such as transfer, disaster prevention, trip, etc. and sharing.



## 2 Share the expenses appropriately

It is important to regularly settle the membership fee collected from the members beforehand or at the time of use and to allocate and pay expenses appropriately according to usage frequency and so on.



## 3 Do not make a distinction in fees depending on the form of usage

It will be considered as "compensation for transportation" if there is a difference in the amount of membership fee etc. between people who drives by himself and who uses the car asking a volunteer for driving.



## 4 Do not stipulate volunteer driver's fee

A fee for a volunteer driver is not permitted except for items with no cashability or spontaneous gratuity, etc.. However, there is no problem to pay allowance to officials involved in the management of the entire society such as accounting and event planning in distinction from the compensation for driving.



## \* Reference Yoshino's Car Sharing Society's Case \*

In the Yoshino Town's Post Disaster Public Housing where the Exploratory Committee of Ishinomaki Ecological EV Car Sharing provided field support:

- ① With the aim of developing a community that residents can help each other through car sharing, about twenty residents of the housing established "Yoshino's Car Sharing Society" to do outing support, trip, disaster prevention drills, etc. while using a car jointly.
  - ② After 5 km or 1 hour use, a user deposits 500 yen to the person in charge. They calculate expenses once every few months and settle it so as to be appropriately allocated and burdened according to usage frequency.
  - ③ People who use a car by themselves and people who use a car asking a volunteer to drive are under the same conditions.
  - ④ There is no special compensation for the volunteer drivers, but it seems that some people return a favor by their own volition such as buying something when they asked the driver to take them for shopping or giving a share of homemade dish.
- In addition, fixed amount is paid to the officials who are managing the society such as accounting, and there are volunteer drivers as well in the officials.

# Spreading “Community Car Sharing”

“Community car sharing” started in Ishinomaki are spreading in various cases



## To the local model

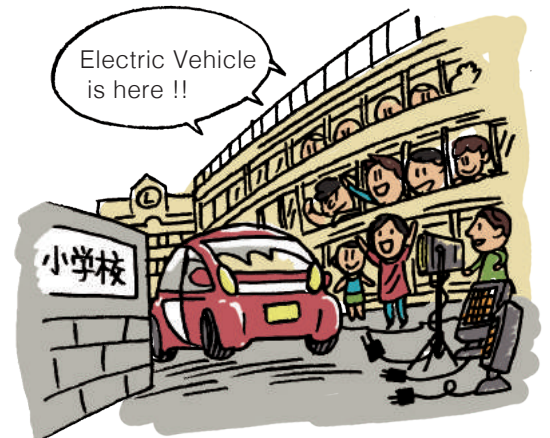
We are advancing the plan that we introduce “community car sharing” into 15 areas in Ishinomaki city. We founded the “The Exploratory Committee of Ishinomaki Ecological EV car sharing” with city council, local college and local non-profit organization. Their members have been discussing about how we boost the quality of that model and how we position community car sharing as a city policy. We aim to build a sustainable local model.



▲ Introducing a system in Yoshino Town as a role model into other districts

## Build a disaster prevention network

We proceed to construct a structure that people can utilize electric vehicles which are usually used for community car sharing for the disaster scene. City council and we discuss many things. For example... We're trying to make a disaster prevention policy that Yoshino Town's Post Disaster Public Housing which can generate electricity by sunlight plays a role as a EV-charging base in Ishinomaki city when disaster happens.



▲ As an emergency battery in local areas

## To the depopulation areas

Community car sharing are expected to play a role in supplementing public transportations in depopulation areas. Among the well informed persons, they started on discussing about the new model of public transportation which collaborates self-help, mutual assistance, and public assistance. In Ishinomaki's inshore area, we deal with the problem what transportation should be in the areas where are depopulating and aging



▲ Taking residents to the hub of public transportation



## To remote islands

Utilizing of community car sharing and Electric vehicle started to secure emergency power supplier in remote islands where residents often have blackout and are aging.

People have already been using Electrical powered trucks in Azishima island in Ishinomaki.



▲ EV are utilized as an emergency battery in remote islands where residents often have blackout.

## To all over Japan

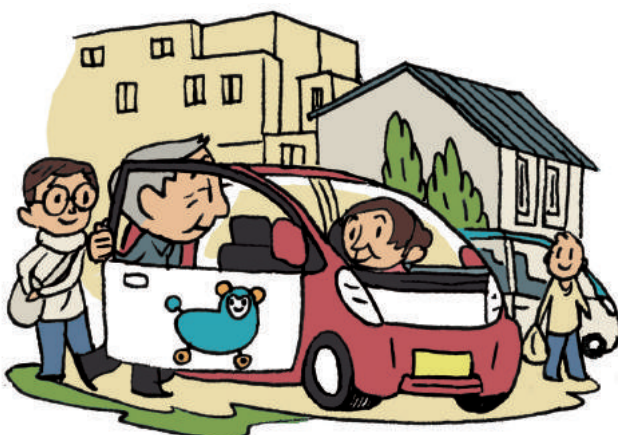
We have been promoting community car sharing to make the system which people can use not only in disaster area but also all over Japan. We started in cooperating with Urban Renaissance Agency (UR) for proceeding the project in Ishinomaki's restoration public housings. In addition, we discuss about the promotion of this system to other areas.

We aim for the system which all groups can manage it. (not only operators they run housing business but also autonomy, non-profit, neighborhood association and as of the likes.)

Community car sharing were born in Ishinomaki where many people have been helped by all over the world after huge tsunami. Now, it's time to repay for them by passing this system from here, Ishinomaki.



We wish this system which were born through a chain of mutual help makes a lot more chain of mutual help.



Why don't you try to introducing community car sharing in your town?



P&amp;G ジャパン社員寄付基金

MPEC | 三菱電機プラントエンジニアリング株式会社

古河電工



UR都市機構

石巻市

東北大学  
TOHOKU UNIVERSITY日本カーシェアリング協会  
Japan Car Sharing Association

Not only them, but many other people and organizations have cooperated us. We would like to express our appreciation for their help for the "Solar Power System Car Sharing" donation.

## The Member of The Exploratory Committee of Ishinoamaki Ecological EV Car Sharing

石巻市 (復興政策部 ICT 総合推進室・復興政策部地域協働課・福祉部生活再建支援課・建設部住宅管理課・復興事業部復興住宅課 環境部環境課・復興事業部基盤整備課・健康部包括ケア推進室・福祉部福祉総務課)

山本憲一 (石巻専修大学 理工学部 機械工学科自動車工学コース 教授)

竹中 徹 (石巻専修大学 経営学部 経営学科 准教授)

鈴木高宏 (東北大学 未来科学技術共同研究センター 教授)

増田 敬 (石巻仮設住宅自治連合推進会 会長)

高木俊寛 (三菱電機プラントエンジニアリング株式会社 災害対応型次世代エネルギー推進グループ 副本部長)

奥間保胤 (株式会社CDS経営戦略研究所 パートナー)

吉澤武彦 (一般社団法人日本カーシェアリング協会 代表理事)



## Solar Car Share fundraising recruitment

Please allow us to ask for your further support to promote the development of this unique car-sharing program in Ishinoamaki, using Electric Vehicles and its sources of power is generated by natural energy

**Single unit of donation is 1000 yen.**

※ Single unit or more also welcome

Japan Post Bank

Payee Account Number : 02220-9-120559

\* From other banks → Store name : 二二九 Store number : 229 Deposit events : Checking account number : 0120559

✿ Please let us know about your contribution by e-mail in the "so lar car share fund-raising" and I receive or "Contact" in the communication eld.

※It will be posted your name who donated to the home page.

(Please fill in the If you would like to refrain from the publication posted unnecessary and communication field or e-mail.)

### The Exploratory Committee of Ishinoamaki Ecological EV Car Sharing

TEL/FAX : 0225-22-1453 Mail : info@japan-csa.org

HP : http://www.japan-csa.org/

### Japan Car Sharing Association

〒986-0813

ekimaekitadouri ishinoamaki-shi miyagi-ken Japan

### OPEN JAPAN Volunteer base

〒986-0821

1-1-2sumiyoshi-cyo ishinoamaki-shi miyagi-ken japan

Whoever thinks  
'Okay let's just try!',  
please don't hesitate.  
Contact us for any advice.

